



GREEN LION



Green Lion

Turbo Vacuum Cleaner

SKU: GN130WCVACWH

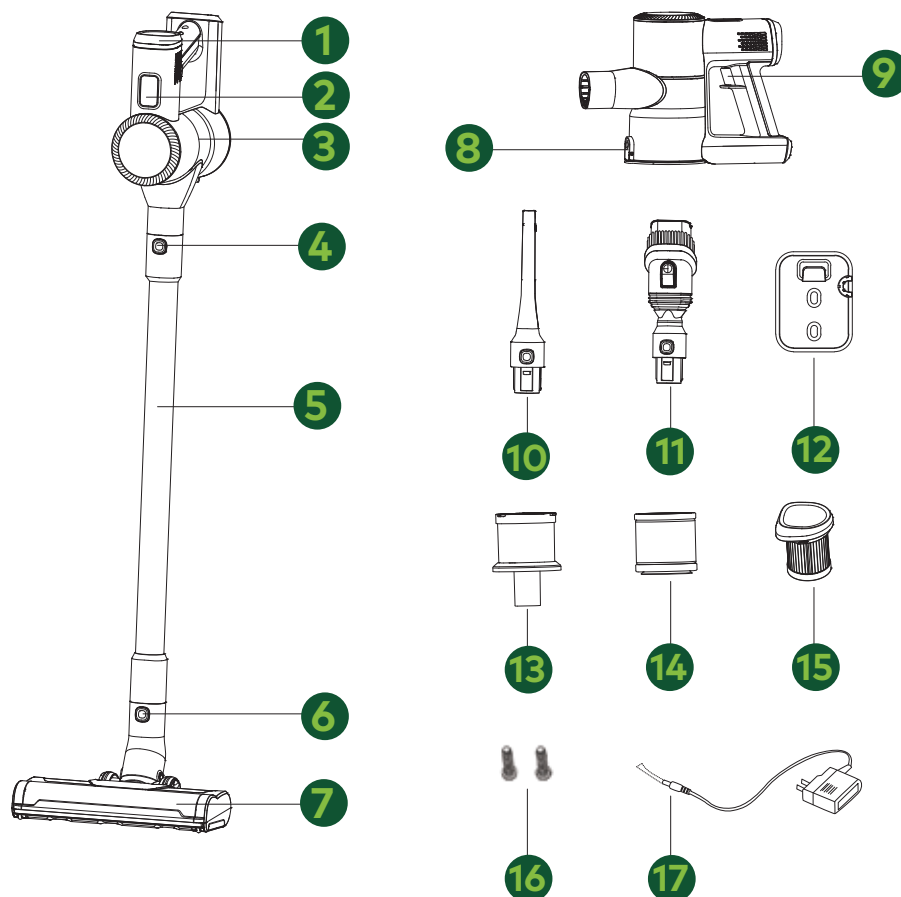
Table of Contents

Features	2
Schematic View	2
Accessory Guide	3
Assembly	4
Product Operation	5
Emptying the Dustbin	5
Charging	6
Indicator Guide	6
Working/Charging Time	7
Daily Maintenance	7
Troubleshooting	11
Specifications	12
Safety Precautions	12
Warranty	16
Contact Us	16

Features

1. **Lightweight and Versatile:** Designed for ease of use and flexibility in various cleaning environments.
2. **Converts to Handheld Vacuum:** Easily transforms into a handheld unit for convenient spot cleaning.
3. **One-Button Dust Tank Removal:** Features a simple, single-button release for quick dust tank emptying.
4. **Two Speed Modes with LED Display:** Offers dual speed settings with a clear LED display for enhanced control.
5. **Five-Stage Filtration System with Washable Filter:** Incorporates a comprehensive five-stage filtration system that includes a reusable, washable filter.
6. **Motorized Brush with LED Light:** Equipped with a powered brush that illuminates under furniture and dark corners.
7. **Wall Mount to Save Space:** Includes a wall mount for easy storage and space optimization.

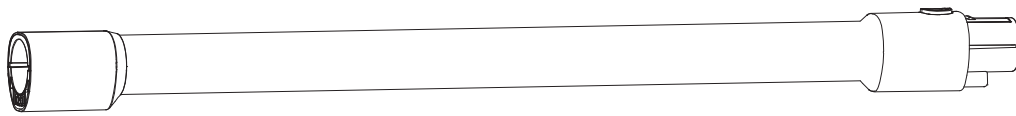
Schematic View



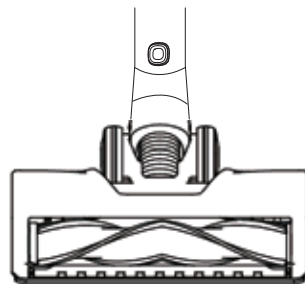
1. Main Body
2. Max Mode Button
3. Dustbin
4. Wand Release Button
5. Aluminum Tube
6. Power Brush Release Button
7. Full-size LED Multi-Functional Power Brush
8. Dustbin Empty Button
9. Switch Button
10. Long Crevice
11. 2-in-1 Combination Brush
12. Wall Hanging
13. Mesh Filter
14. Air Intake Filter Cotton
15. Outlet HEPA Filter
16. Screws
17. Power Adapter

Accessory Guide

Aluminum tube: Adjust the handle's length to fit your cleaning needs.

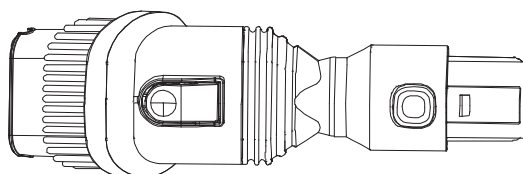


Full-size LED Multi-functional Power Brush: Perfect for hard floors and carpets, picking up both coarse and fine dirt.



2-in-1 Combination/Long Crevice:

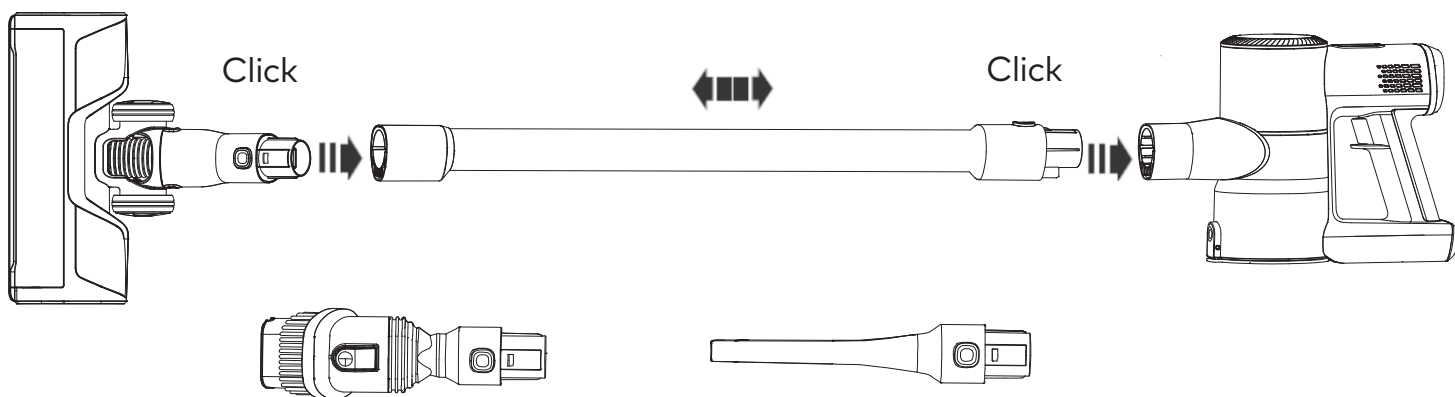
- A. Use the bristles to clean hard surface furniture.
- B. Remove the bristles to clean upholstered furniture, curtains, and more.



Ideal for cleaning small gaps in cars or rooms, as well as irregular surfaces like car seat cushions and corners.

Assembly

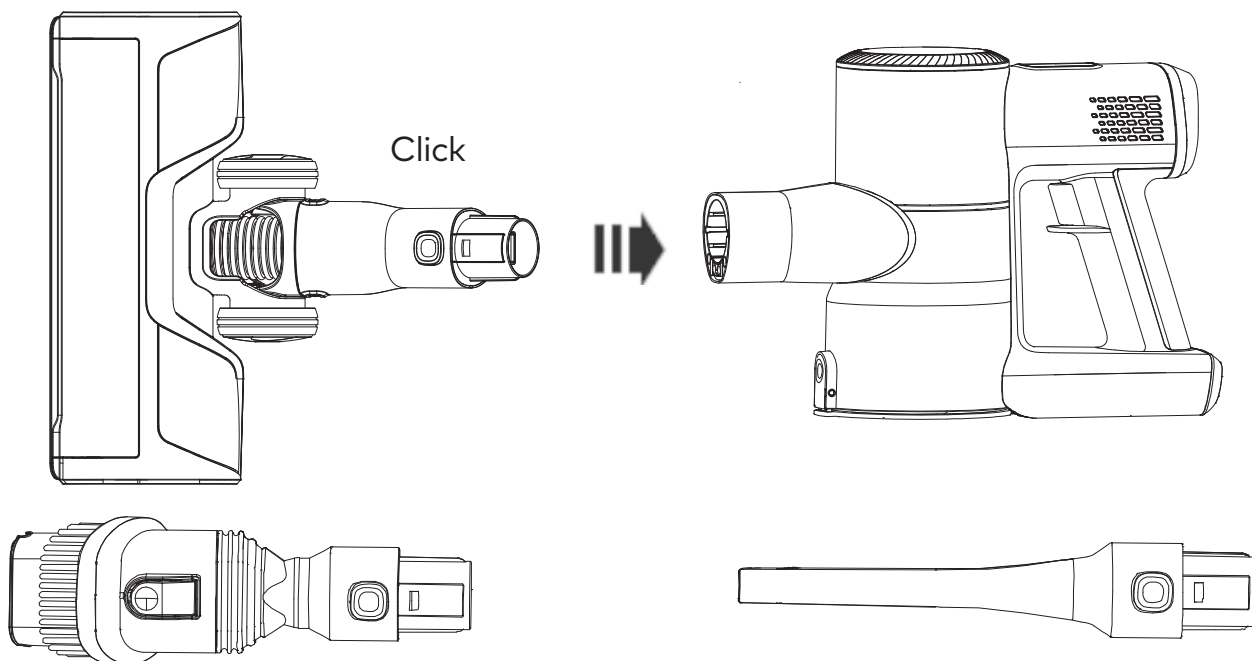
Method 1: Attach the power brush or your chosen cleaning tool to the aluminum tube until it clicks securely. Then, insert the top of the tube into the handheld vacuum until it clicks into place.



Method 2:

(1) Press the wand release button to detach the wand from the handheld vacuum.

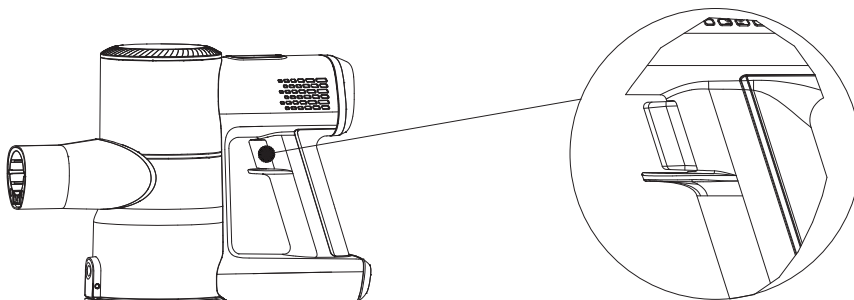
(2) Attach the desired cleaning tool directly to the handheld vacuum.



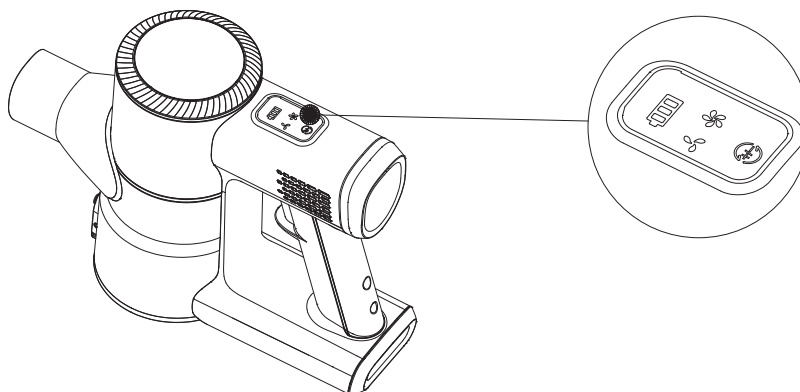
Product Operation

Note: Before the first use, charge the vacuum following the "Battery Charging" instructions, and adjust the environment to a temperature between 4°C (39.2°F) and 40°C (104°F). After letting it sit for 2 hours, recharge the battery once it's at room temperature. Choose the right accessories for your needs as outlined in the accessory guide.

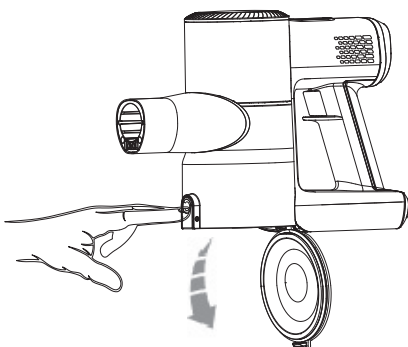
1. Press the switch button once to start vacuuming.



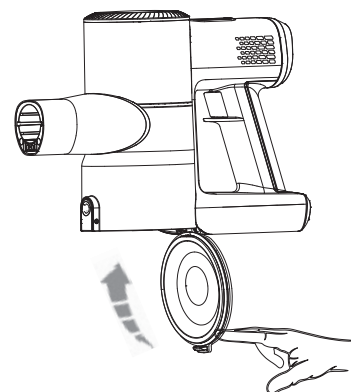
Press the MAX button to switch between Regular mode, which is ideal for daily cleaning, and Max mode, perfect for deep cleaning tasks like carpet cleaning.



Emptying the Dustbin



1. After use, press the release button on the side of the dustbin to empty its contents.



2. Reattach the bottom cover of the dustbin.

Charging

1. The machine has no power and needs charging in case one battery indicator flashes.

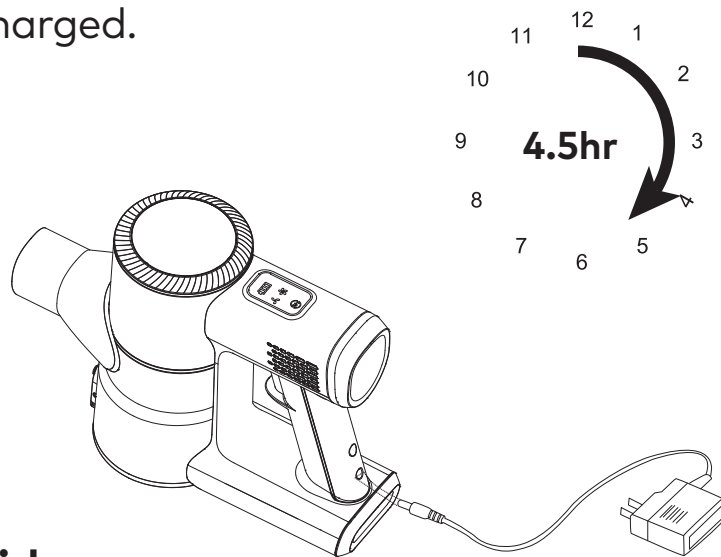
Note: If the machine is hot from use, let it cool for 1 hour before charging.

2. A fully charged battery will show all white lights.

Tips

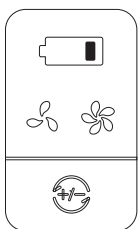
1. To prevent tripping, keep the appliance near a wall while charging.

2. Store the battery in a cool, dry place if not in use for a long time, and ensure it is half-charged.

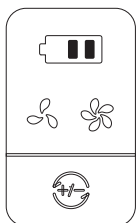


Indicator Guide

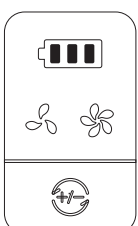
A. Charging



1. Two blinking white lights with others solid indicate 30 % battery charge.

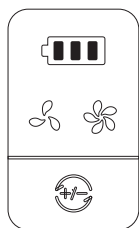


2. One blinking white light with others solid indicates 70 % battery charge.

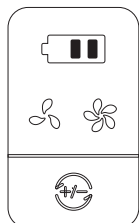


3. All solid white lights indicate the battery is fully charged.

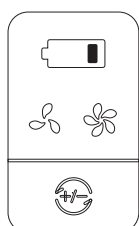
B. Operating



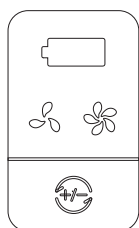
Three solid white lights indicate the device is at full power.



Two solid white lights signify the device has 70 % power remaining.



One solid white light shows the device has 30 % power left.



Three blinking white lights mean the device has no power.

Working/Charging Time

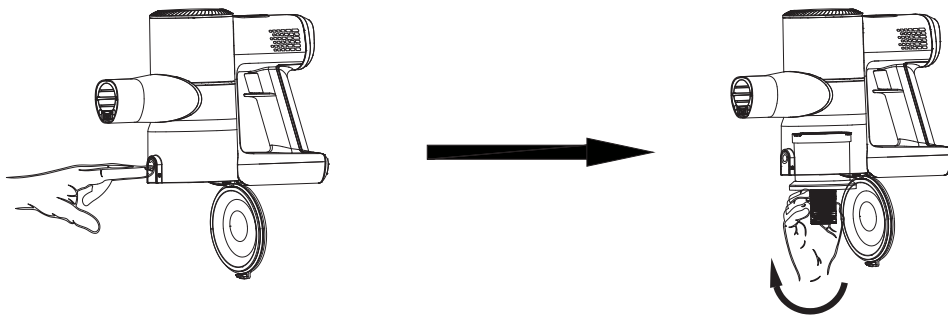
Operating Time: The vacuum runs for about 35 minutes in regular mode and about 14 minutes in MAX mode.

Charging Time: It takes about 4.5 hours to charge the battery; testing was done in a lab environment with temperatures between 4°C (39.2°F) and 40°C (104°F).

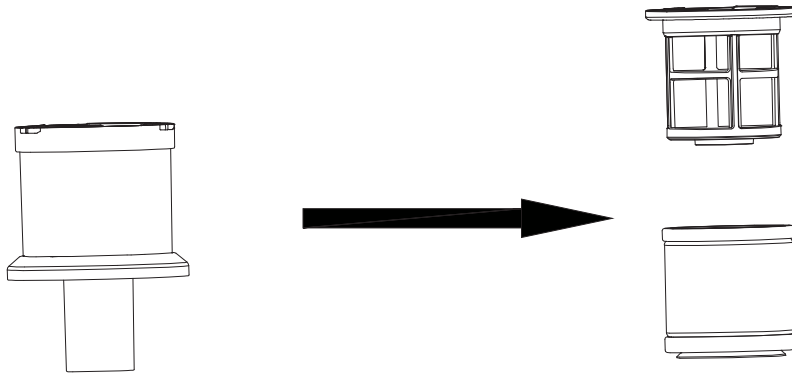
Daily Maintenance

A. Cleaning the Dustbin and Filters

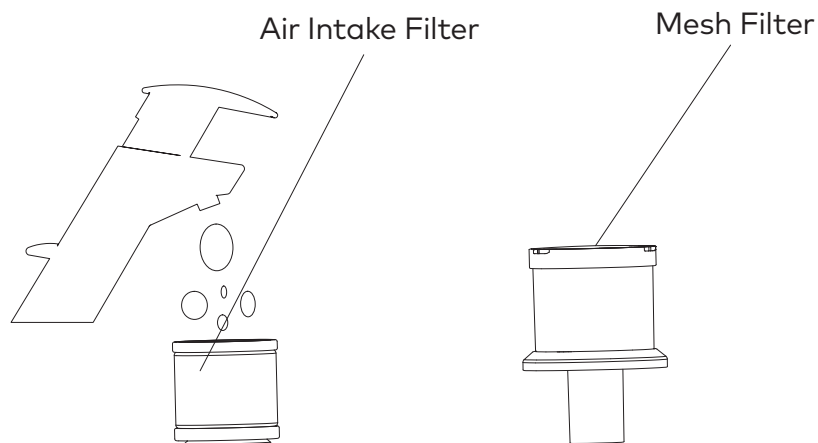
1. Press the dustbin release button to open the dustbin cover as shown in the illustration.
2. Rotate the filter outwards as demonstrated in the image below.



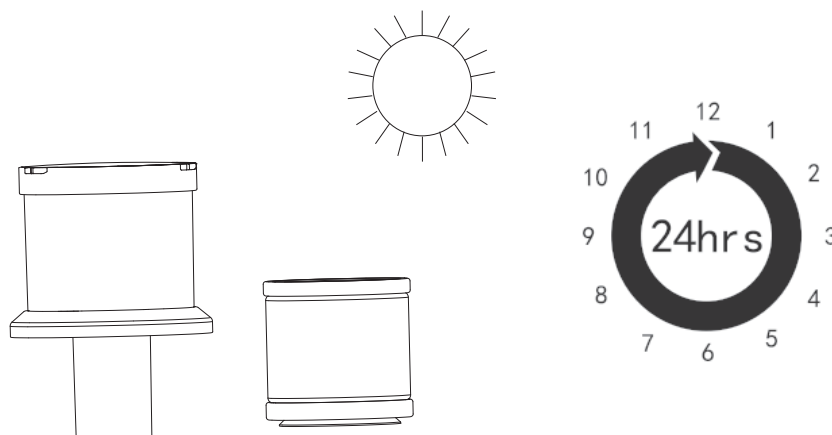
3. Remove the HEPA filter, then lift up the cover to access the internal components.



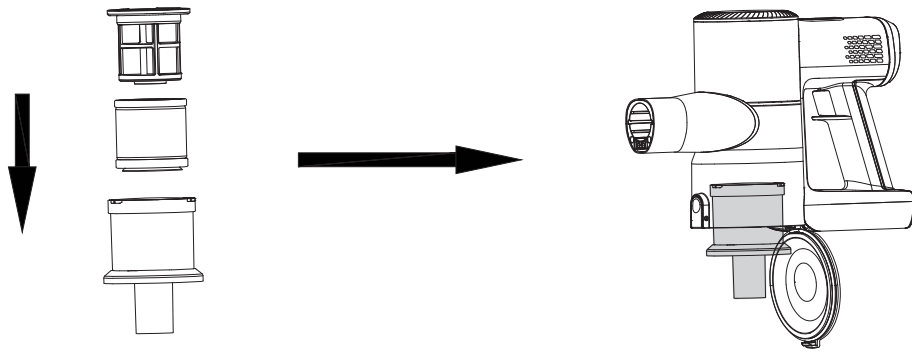
4. Clean the mesh filter and air intake filter by washing them thoroughly.



5. Please ensure the HEPA and mesh filters are completely dry before placing them back in the dustbin; the dustbin and mesh filter should be thoroughly air-dried before reassembly. When dry, reattach the mesh filter to the filter assembly.

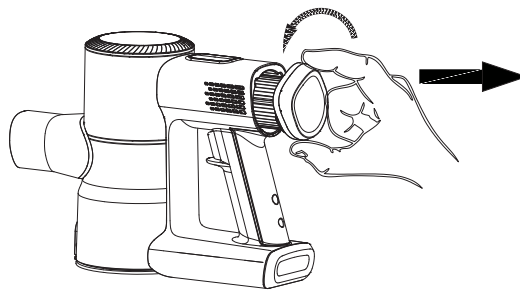


6. After ensuring the filter is completely dry, reassemble it back into the casing properly.

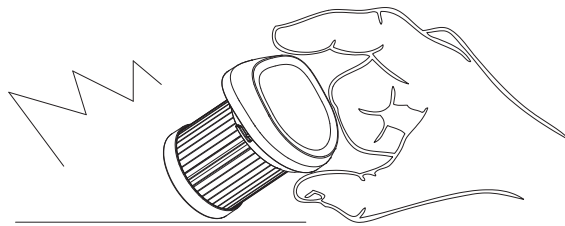


B. Clean the air HEPA

Rotate the air outlet HEPA filter to the left and gently pull it out for cleaning.



2. Tap the filter gently on the ground to remove dust from the HEPA.

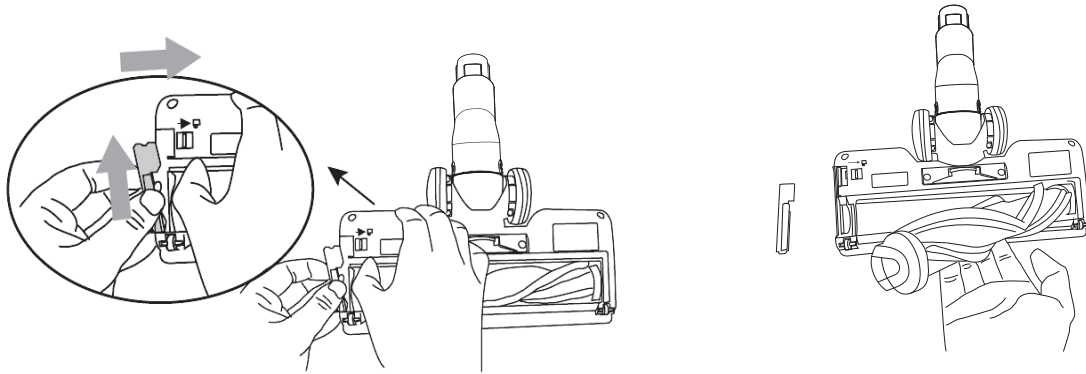


3. If the HEPA filter is heavily dusty, wash it with water, dry it completely, and reinstall it into the main body.

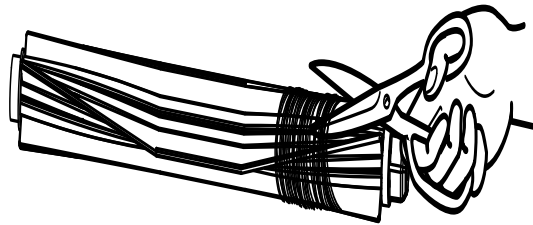


C. Cleaning the Brush

1. Push the tab to the right, lift the brush latch on the right side, and then remove the brush from the brush window as shown in the above image.

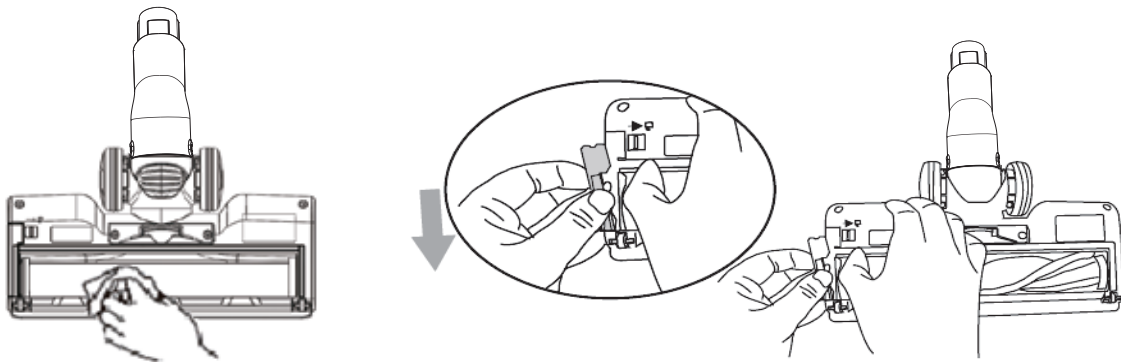


2. Use scissors to remove any hair and debris wrapped around the roller.



3. Gently clean the transparent brush window to remove any dirt.

4. After cleaning, reinstall the brush back into the machine.



Problem	Possible Causes	Solutions
Debris Not Collected	<ol style="list-style-type: none"> 1. Dustbin is full. 2. Filters are clogged or dirty. 3. Filters are non-functional. 	<ol style="list-style-type: none"> 1. Empty the dustbin 2. Clean the filters 3. Replace worn filters
Brush roller not spinning	The roller brush clogged by hair or fibers.	Clean the roller brush
Insufficient Suction	<ol style="list-style-type: none"> 1. Dustbin is not securely fixed in its place. 2. Filters are clogged or dirty. 3. Dustbin has not been installed properly. 4. battery level is low. 5. Nozzle's dirt passage is clogged. 	<ol style="list-style-type: none"> 1. Reinstall the dustbin and ensure the lid is securely closed 2. Clean the filters 3. Reinstall the dustbin 4. Fully charge the battery 5. Disconnect the nozzle to remove debris
Unexpected Shutdown	<ol style="list-style-type: none"> 1. Dustbin is full. 2. Filters are clogged or dirty. 3. Vacuum overheats. 	<ol style="list-style-type: none"> 1. Empty the dustbin. 2. Clean the filters. 3. Allow the vacuum to cool down, then retry.
Vacuum does not turn on or off	<ol style="list-style-type: none"> 1. Battery is low. 2. Vacuum overheats. 	<ol style="list-style-type: none"> 1. Fully charge the battery. 2. Allow the vacuum to cool down, then retry operation.
Short operating time	<ol style="list-style-type: none"> 1. Power is low. 2. Filters are clogged or dirty. 	<ol style="list-style-type: none"> 1. Fully charge the battery. 2. Check if filters are clogged or dirty.

Specifications

Voltage	18.5V (5Cells)
Power	130W
Dust tank capacity	0.5L
Battery type	Lithium
Battery capacity	2200mAh
Operating time	14min (High speed)/35min (Normal speed)
Vacuum	≥9KPa
Max. Suction Power	≥28W
Charging time	4.5H
Noise	≤65db
Certificate	CB/CE/ROHS

Safety Precautions



* Read the operating instructions carefully and follow all safety information.



* Failure to follow safety instructions and handling guidelines may result in personal injury or property damage.

* We assume no liability for injuries or damages resulting from improper use.

* Ignoring these instructions will void the warranty or guarantee.

1. To avoid fire, explosion, or injury, check the battery pack and charger for any damage before use.
2. Do not use the vacuum with a damaged battery pack or charger.
3. If the handheld vacuum or wand is damaged, stop using it immediately.
4. Do not use the vacuum outdoors or on wet surfaces; it is intended for dry surfaces only.
5. Do not vacuum hard or sharp objects like glass, nails, screws, or coins that could damage the vacuum.
6. Do not vacuum drywall dust, fireplace ash, or embers, and do not attach it to power tools for dust collection.
7. Do not vacuum up smoking or burning items like hot coals, cigarette butts, or matches.
8. Do not vacuum flammable or combustible materials such as lighter fluid, gasoline, or kerosene, or use the vacuum where these may be present.
9. Do not vacuum toxic substances such as chlorine bleach, ammonia, or drain cleaner.
10. Do not use the vacuum in enclosed spaces where vapors from paint, paint thinner, moth-proofing substances, or flammable dust may be present.
11. Do not vacuum any liquids.
12. Do not immerse the vacuum in water or any other liquids.
13. Use extra caution when cleaning on stairs.
14. Do not handle the charger or vacuum with wet hands.
15. Do not leave the vacuum unattended while in use.
16. Always turn off the vacuum before connecting or disconnecting the floor nozzle.
17. Use only branded chargers and batteries; other types may burst, causing injury and damage.
18. Do not incinerate the vacuum, even if severely damaged, as the battery pack may explode in a fire.
19. Keep your work area well-lit for safe operation.

- 20. Keep the vacuum moving continuously over the carpet to avoid damaging carpet fibers.
- 21. Do not place the vacuum on unstable surfaces like chairs or tables.
- 22. Do not insert any objects into openings, and do not use the vacuum if any opening is blocked; keep them clear of dust, lint, and hair to maintain airflow.
- 23. Do not let young children operate the vacuum or use it as a toy; close supervision is required when the appliance is near children.
- 24. Do not use the vacuum without the brush roller, dustbin, and all filters in place.
- 25. Do not use if airflow is restricted; if the air paths or floor nozzle are blocked, turn off the vacuum, remove the battery, clear all obstructions, and then reinstall the battery before turning it back on.
- 26. Keep the floor nozzle away from hair, face, fingers, bare feet, or loose clothing.
- 27. Do not charge the battery pack if the temperature is below 32°F (0°C) or above 122°F (50°C).
- 28. Store the appliance indoors; do not use or store it below -4°F (-20°C), and ensure it is at room temperature before operating.

B. Accessories and Dustbin Notes

- 1. Before turning on the vacuum, ensure all filters are completely dry after routine cleaning.
- 2. Make sure brush rollers, dustbin, and all filters are correctly in place after maintenance.
- 3. Ensure accessories are free of blockages, and keep openings away from the face and body.
- 4. Use only the recommended filters and accessories, as using others will void the warranty.
- 5. For optimal performance, wash the filter with water every 2 weeks; failure to do so may cause poor performance and loss of suction.
- 6. Replace the filter every 3 months for continued efficiency.

C. Battery Safety

- 1.** The battery pack is the power source for the appliance; do not carry the appliance with your finger on the power button when the battery pack is installed.
- 2.** Do not charge the appliance while it is powered on.
- 3.** Disconnect the battery pack from the appliance before making any adjustments or troubleshooting.
- 4.** Use only the recommended chargers to charge the battery pack; using an incorrect charger may create a fire risk.
- 5.** Use the appliance only with the specifically designated battery pack; using other battery packs may lead to injury or fire.
- 6.** In case that liquid is ejected from the battery, avoid contact with this liquid as it is toxic may cause irritation or burns. If contact occurs, rinse with water, and if it contacts eyes, seek medical attention.
- 7.** Keep the battery pack away from heated surfaces to prevent damage.
- 8.** Do not expose the battery pack or appliance to fire or temperatures above 266°F (130°C) as this may cause an explosion.
- 9.** Follow all charging instructions, and do not charge the battery pack or appliance outside the specified temperature range to prevent damage and reduce fire risk.
- 10.** Have the appliance serviced only by a qualified repair person using identical replacement parts; do not attempt repairs yourself unless specified in the user instructions.
- 11.** Store the battery pack at temperatures between -4°F (-20°C) and 113°F (45°C) to maintain battery life.
- 12.** Do not expose the battery pack to or submerge it in water, saltwater, or any other liquids.

Warranty

Products that you buy directly from our **Green Lion** website or shop come with a 24-month warranty.

When you buy **Green Lion** products from any of our approved sellers, you only get a 12-month warranty. If you want to extend this warranty, go to our website at **<https://www.greenlion.net/warranty>** and fill out the form with your information. Don't forget to upload a picture of the product too. After we've checked and accepted your request, we'll send you an email to confirm that your product's warranty has been extended.

For more info, please check:

<https://www.greenlion.net/warranty>

Contact Us

If you have any questions about this Privacy Policy, please contact us at:

Website: **<https://www.greenlion.net/>**

Sales: **sales@greenlion.net**

Service Support: **Support@greenlion.net**

Telegram: **[@greenlion_global](https://www.telegram.com/@greenlion_global)**

Instagram: **[@greenlion_global](https://www.instagram.com/greenlion_global)**